



ANNEXE
STUDIO

TECHNICAL INFORMATION

Esplanade – Theatres on the Bay
1 Esplanade Drive
Singapore 038981

T (65) 6828 8336
E annexstudio@esplanade.com

Esplanade – Theatres on the Bay’s **ANNEXE STUDIO** is a multi-disciplinary venue that encourages experimentation, interaction and innovation.

With 650 sqm across two floors, this flexible space aims to offer both artist and audience new experiences.

CAPACITY

| | | |
|--------------------|-----------------------|-----|
| Standing room only | 460, comprising: | |
| | Level 1 (main studio) | 310 |
| | Level 2 (gallery) | 150 |

Note that audience seating is possible but will significantly reduce capacity. The capacity indicated is the venue’s limit, and includes audience, crew, ushers and any other persons required in the venue.

LOADING AREA

Accessed along Raffles Avenue, the Annexe Studio’s loading area is conveniently located at street level with step-free access.

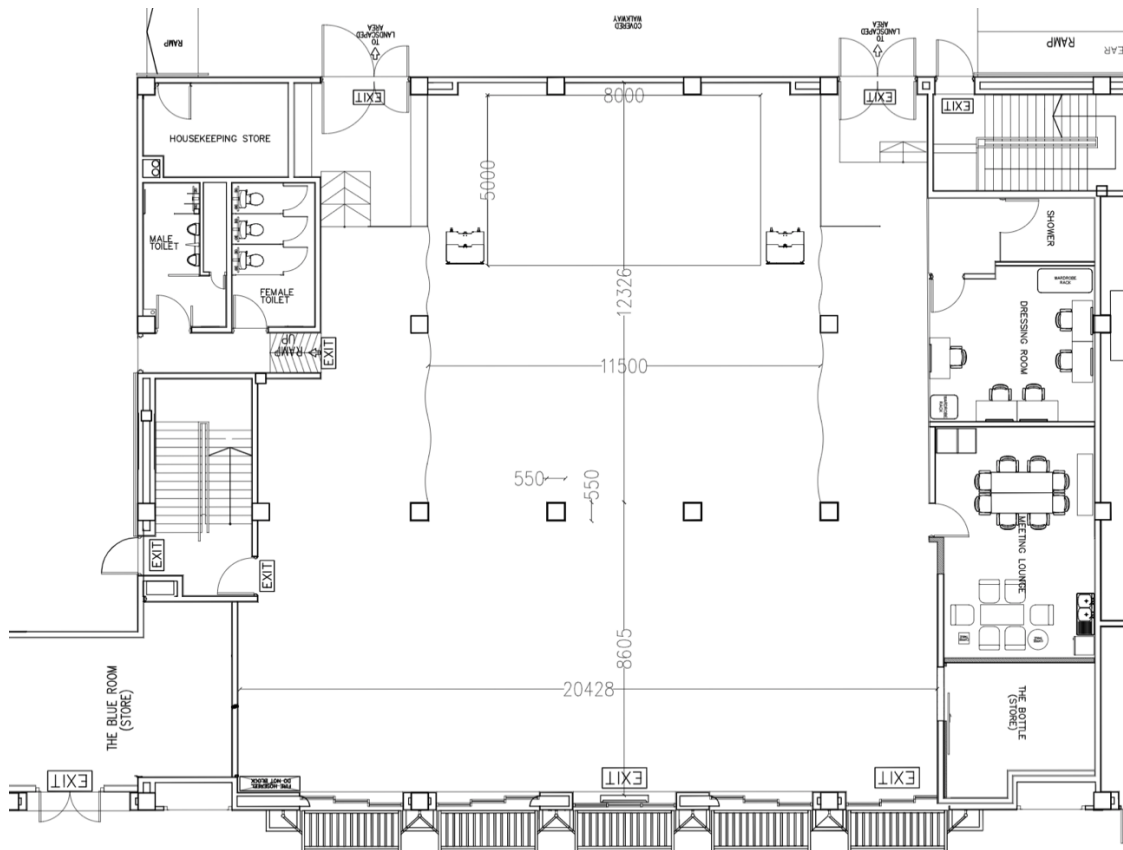
Opening 2.63mH x 2.8mW

STAGE

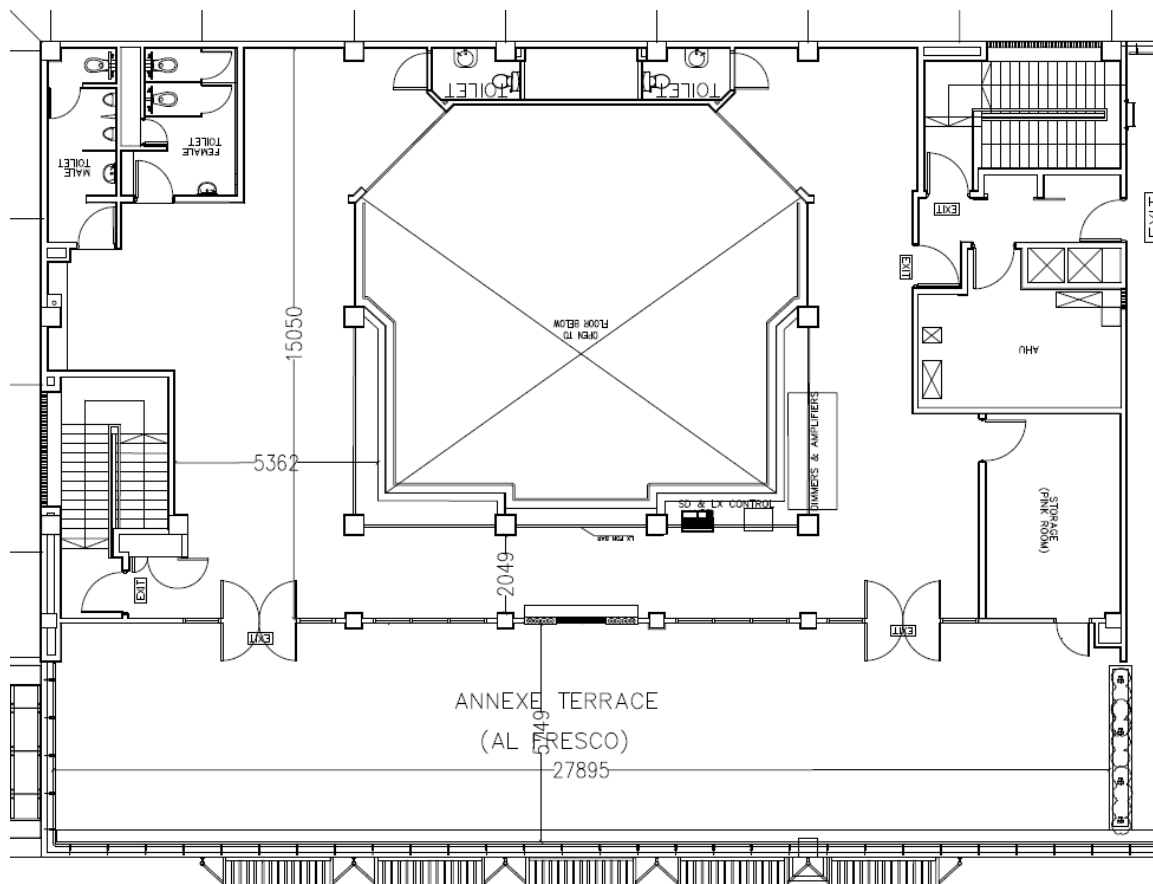
Floor Black Weathertex stage floor
 Dimensions Approx. 12mD x 11.5mW (Level 1, main studio deck)

Detailed venue plans are available upon request

Level 1 (Main Studio)



Level 2 (Gallery)



STAGE DECK

The venue has a default (8W x 5D x 0.8H)m stage comprised of 20 x NivoFlex Professional risers. Any variation to this default is to be borne by the user.

These risers are modular (2 x 1)m platforms with adjustable heights of 160mm, 200mm, 400mm, 600mm, 800mm and 1000mm. Additional risers can be made available with prior arrangement.

CHAIRS & MUSIC STANDS

Chairs, for performance use, and music stands, are available with prior arrangement.

DANCE EQUIPMENT

A selection of performance surfaces and complementary freestanding ballet barres and mirrors, are available with prior arrangement.

WARDROBE, WIGS & MAKE-UP

Laundry and minor alterations of performance-related costumes, and wigs and make-up support, may be arranged with prior notice.

ELECTRICS

All electrical equipment brought into the Annexe Studio must conform to local codes, be of good quality, and in good repair. Suspect equipment will be subject to an Electrical Safety Test and the Annexe Studio reserves the right to disallow its use.

Power connections, to isolators, are subject to inspection by a Licensed Electrical Worker (LEW) and ELCB and overload protection are to be supplied by the User.

POWER

| | |
|-----------------------------|--------------------------|
| Local Power Supply | 230v, single-phase, 50Hz |
| Standard Domestic Connector | 13A Type G (British) |

Note that power in the venue is shared between lighting, video, and sound.

WORK / REHEARSAL LIGHTING

The Annexe Studio has ample domestic lighting in all areas that are ideal for workshops, rehearsals and general non-performance related activities. The main deck is lit with high bay LED lights and both Level 1 and Level 2 are lit with LED tubes.

STAGE / PERFORMANCE LIGHTING

The Annexe Studio has been fitted with a basic lighting rig consisting of Martin Mac TW1s, for an overhead stage wash, and Profiles, for a frontal wash. A combination of these creates a static general wash on the stage.

Any replacement, removal, or amendment to this rig is to be discussed with the venue in advance and all expenses related to restoring the rig are to be borne by the User. A detailed lighting plan is available upon request.

Overhead Stage Wash

| | | |
|---------|------|--|
| Truss A | [05] | Martin Mac TW1 |
| | [04] | 500W Flood Lights (no colour gel slot) |

| | | |
|-------------|------|----------------|
| Truss B & C | [05] | Martin Mac TW1 |
|-------------|------|----------------|

Frontal Wash

| | | |
|----------------|------|----------------------|
| Level 2 LX bar | [10] | ETC Source 4 (36deg) |
|----------------|------|----------------------|

| | | |
|----------------|------|-----------|
| <u>Effects</u> | [01] | MDG Hazer |
|----------------|------|-----------|

| | | |
|--------------|------|--|
| <u>Floor</u> | [04] | Martin Mac Aura LED, 3850lm, single-lens wash with fully premixed colour, broad colour palette, RGBW colour mixing, 11/58° Zoom <i>Available upon request</i> |
|--------------|------|--|

| | | |
|--|------|---|
| | [16] | ETC Source 4 Par (NSP) for side lights in flat floor configuration <i>Available upon request</i> |
|--|------|---|

| | | |
|--|------|-----------------------|
| | [18] | 10 Amp Dimmer Circuit |
|--|------|-----------------------|

HOUSE LIGHTS

The House Lights consist of warm, dimmable, track LED lights on both Levels 1 and 2. These are controlled from the FOH control position on Level 2, house right.

CONTROLS

Grand MA2 Lite, with programmable submasters, located house right, at the Level 2 FOH control position.

PROJECTION

The Annexe Studio is equipped with a projector on the second floor. Rental rates are available through your production liaison. Controls are located at the Level 2 FOH control position.

| | |
|------------|------------------------|
| Projector | Panasonic PT – DZ8780K |
| Lens | Standard 1.22 – 2.26:1 |
| Brightness | 8,000 lm |
| Resolution | 1920 by 1200 (WUXGA) |

A projection medium screen measuring 4.47m(W) x 2.6m(H) (aspect ratio 16:9) is also available and can be rigged upstage.

AUDIO

The Annexe Studio is equipped with a standard pre-rigged, aligned and pre-tuned audio configuration. All expenses related to restoring to the standard rig from any replacement, removal or amendment are to be borne by the User.

P.A SYSTEM

Level 1 (at stage level; not flown)

| | | |
|---------------------|------|---|
| Main L+R (per side) | [03] | d&b J8 large format 3-way line array loudspeaker |
| Main Sub (per side) | [02] | d&b JSub large format cardoid subwoofer |
| Delays | [06] | Meyer UPM-1P ultra-compact wide coverage loudspeaker (venue installed system – not to be moved) |

Level 2 (at house left & right on stands)

| | |
|------|-------------------------------------|
| [02] | JBL VP7210/95DP 10" powered speaker |
|------|-------------------------------------|

Stage

| | | |
|----------|------|---|
| Foldback | [05] | d&b M4 monitor 2-way full range loudspeaker <i>In-Ear Monitors available upon request; subject to availability</i> |
|----------|------|---|

FRONT-OF-HOUSE CONSOLE

The default front-of-house mix position is located on Level 1, house right. This may be shifted to Level 2, with prior arrangement.

Yamaha QL5 (64 mono + 8 stereo) digital mixing console with:

- 32-channel stage box
- Virtual Rack with complete range of onboard effects and processing

| | | |
|----------|------|---|
| I/O Rack | [01] | Rio 3224-D with 32 analogue inputs, 16 analogue Outputs and 4 AES digital outputs |
|----------|------|---|

PLAYBACK

| | | |
|---|------|----------------------|
| Located at Level 2 FOH control position: | [01] | CD Player / Recorder |
|---|------|----------------------|

MICROPHONES & MIC STANDS

An assortment of microphones are available for smaller-scale amplified events. The use of miniature microphones is chargeable.

COMMUNICATIONS

| | | |
|---|------|----------------------|
| Clearcom Tempest Wireless Intercom System (1 channel, 1 ring) | [05] | beltpacks & headsets |
|---|------|----------------------|

AMENITIES

The User may also enjoy the following amenities available in the Annexe Studio:

- [01] Dressing Room equipped with 5 tables with make-up mirrors, clothes racks and lockers for safekeeping of valuables
- [01] Shower stall and sink with hot and cold running water
- [01] Lounge

The local domestic power supply is 230v, 50 Hz.

Do check in with the Annexe Studio's staff before connecting any electrical appliance and note that any appliance that generates heat, e.g. irons, hair curlers, etc. must be monitored at all times.

Free Wi-Fi and local telephone calls are also available in the venue.

WORKPLACE HEALTH & SAFETY

We take health and safety very seriously at the Annexe Studio and it is of utmost importance that all who work at and visit the venue are free from any harm.

Steel-toed safety shoes are necessary when any loading/unloading and technical work is conducted. Hardhats must also be worn when overhead works occur.

Users are obligated to ensure that their representatives and contractors are briefed and comply with these regulations. The Annexe Studio reserves the right to stop works where necessary, in the interests of security, safety and health.
