

# Pre-Event Guide: March On 2024 Shining in Space



An Esplanade Production

Featuring musicians from Yong Siew Toh Conservatory of Music and Singapore Youth Philharmonic Orchestra

Directed by Jeremy Leong and NONFORM (Singapore)

9 Mar 2024, Sat, 2.30pm (1hr, no intermission)

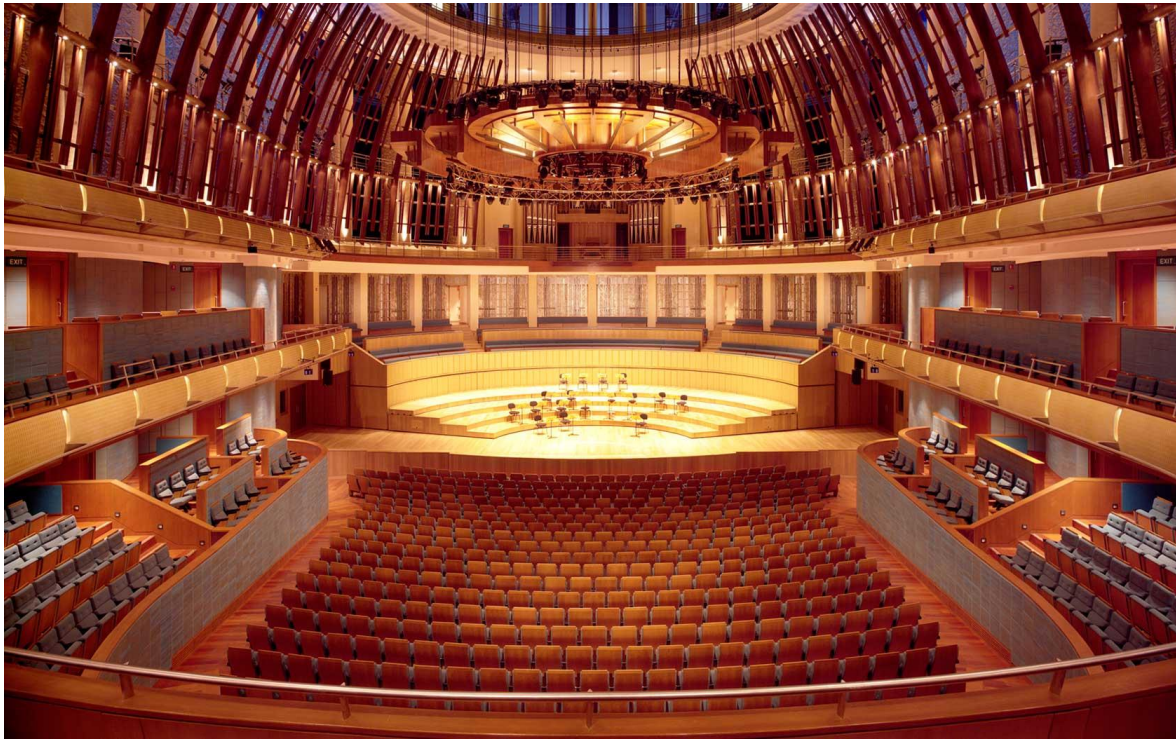
Esplanade Concert Hall

# Going to Esplanade



- I am going to Esplanade – Theatres on the Bay. This is what Esplanade looks like.
- I will be watching a show called *Shining in Space* at the Concert Hall

# Esplanade Concert Hall



- This is the Esplanade Concert Hall. There is a stage.
- A stage is a space where performances take place.
- I am going to the Esplanade Concert Hall to watch a performance.

# Moving about



- There are many seats in the Concert Hall.
- When I buy a ticket to watch a concert, the seat number is indicated on my ticket.
- I will find my seat in the Concert Hall using my ticket. An usher may also assist me.

# Moving about

- During the performance, if I want to move on the spot, that is alright. Sometimes, the performers will also tell us to dance, sing, and join in the fun.
- If I need to use the washroom during the performance, that is alright. An adult or an usher can show me the way to the washroom located outside the venue. After using the washroom, I can ask an adult or an usher to show me back to my seat.

# Calm Space

- Sometimes, I want to leave my seat when the performance is happening and look for a place to calm down anywhere in Esplanade. I can do that.
- I can go back to my seat in the Concert Hall any time during the performance when I am ready.
- A Calm Space at the Concert Hall is located on Level 2, at The Bay Room.

# Directions to the Calm Space at the Concert Hall



- If I am on Level 1, when I come out of the Concert Hall, I will take the staircase up to Level 2.
- If I need help, I can ask an usher to show me the way.

# Directions to the Calm Space at the Concert Hall



- At Level 2, facing the direction where the glass windows are on my right, I will head to the end of the corridor.



# Directions to the Calm Space at the Concert Hall



- I will continue walking straight ahead.

# Directions to the Calm Space at the Concert Hall



- I have arrived at The Bay Room. This is where the Calm Space is located.
- I can go inside to use the Calm Space.

# Calm Space at the Concert Hall



- I can rest here and whenever I am ready, I can head back to the Concert Hall to enjoy the rest of the performance.

# **Information on the performance**

# The three elements



- There are three key parts that tell the story of *Shining in Space* – **actors, musicians, and images.**

# Shining in Space – Actors

- The performance I am watching is about a girl named Shining who loves stars.
- Her best friend is a stuffed toy called Star.
- During the performance, I will see how Shining and Star travel to space, meet new friends and create memories

# Shining in Space – Actors



Shining

- This is Shining. She loves stars and writing in her notebook.
- She does not know how to make friends. During the performance, I will see Shining travel to different planets and meet new friends.
- Shining will invite me to dance at my seat, sing, and clap. I can join in if I want to.

# Shining in Space – Actors



Star

- Star is Shining's best friend. He is a stuffed toy but will be played by an actor.
- Star wants Shining to be happy and to make friends. He will guide her on their travel to space.



# Shining in Space – Actors



Zozo

- In the performance, I will meet other characters including Shining's mum and classmate, Eva.
- I will also meet some friends from the planet. One of them is Zozo, who is a purple creature with long arms. Zozo is angry and sad because he is all alone on his planet. Shining and Star will help Zozo out!

# Shining in Space – Music



- The music I will hear will be performed by an orchestra made up of musicians from Yong Siew Toh Conservatory of Music and the Singapore Youth Philharmonic Orchestra.
- An orchestra is made up of a group of musicians with a conductor.
- The orchestra will be playing music from famous composers including Beethoven, Prokofiev and Glinka. They will also be performing some popular children's songs.

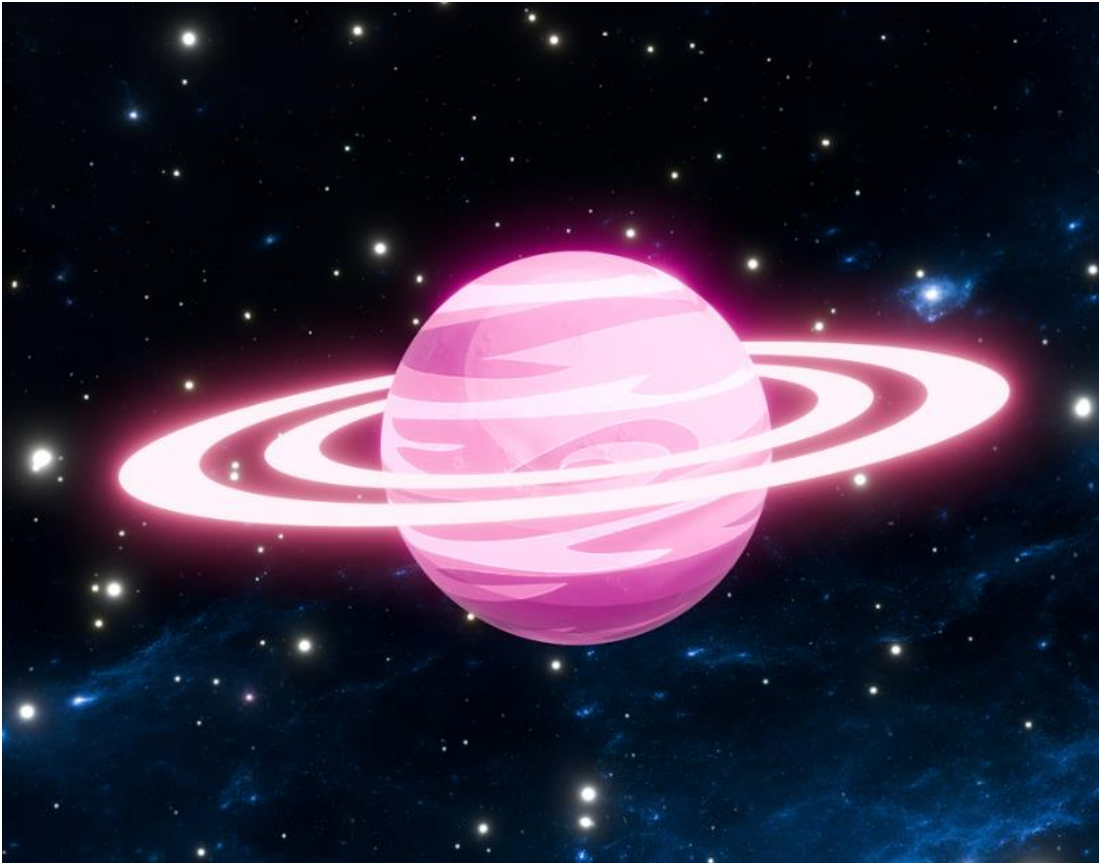
# Shining in Space – Music



Mr Luo Wei

- In a concert, the conductor brings all the performers together and makes sure they are playing according to the same speed.
- The conductor also decides the kind of sound that the orchestra makes; will it be loud or soft? Strong or weak?
- Mr Luo Wei is the conductor for this performance. Star also calls him Captain Melodic.

# Shining in Space – Images



- The images I will see help to show where I am. This is Planet Pink, the first planet I will be visiting with Shining and Star.
- There are also other planets and locations that I will see including Shining's school and the farm she visited with mum.

# And finally...



- I can come dressed in my favourite space outfit to attend the performance! What will I be? An astronaut? An alien?
- I can also come dressed in my regular clothes, as long as I am comfortable.

**See you soon at  
Esplanade.**