

Esplanade Presents  
**March On 2024**  
**A Children's Festival**  
6 – 17 Mar 2024  
[www.esplanade.com/marchon](http://www.esplanade.com/marchon)



Dear friends of the media,

In a world that grows ever more complex and uncertain, how do our children navigate their journey to adulthood? What constitutes a safe haven for them, and where do they find a sense of home?

*March On*, Esplanade – Theatres on the Bay's children's festival returns from 6 – 17 March 2024. In its fourth edition, the festival presents specially commissioned immersive experiences by homegrown companies as well as international co-productions and presentations exploring the themes of home, adventure and coming of age.

For children, home transcends the confines of a roof overhead; it encompasses emotions and an imaginative refuge where they can freely engage in play and weave dreams. *March On* delves into the concept of "shelter", exploring its diverse expressions and forms through captivating performances and interactive workshops. We hope to encourage children to reflect on what shields and inspires them, fostering a desire to contribute to a brighter future for themselves and the world they inhabit.

In the Esplanade Theatre, we are proud to present well-known Akram Khan Company's *Jungle Book reimagined*. An Esplanade co-production, this powerful performance of theatre and dance has been presented at international venues and festivals such as Edinburgh International Festival, Lincoln Center for the Performing Arts – New York, New Vision Arts Festival – Hong Kong and more. This famous tale of Kipling's will be retold with a new sense of urgency and reinterpreted via the lens of children today—those who will inherit our world and become our future storytellers.

*March On* continues to be a festival where we work with Singapore artists versed in engaging with young audiences across arts disciplines. This year's festival will feature two new works commissioned by Esplanade. The first is the return of immersive theatre company Void Deck Games with *Caliban's Island* where children and their adult buddies go on an interactive adventure around Esplanade as they play characters, make challenging choices and complete quests. We are also excited to introduce Singapore-based artist collective PLAY! to *March On* with *Aki's Playground*. This is a multi-sensory and interactive experience where participants of all ages are invited to explore magical worlds.

Theatre magic continues with Denmark's Theatre Madam Bach's stunning show *HOME*. Using a unique blend of puppetry, music, and evocative storytelling, the performance sparks curiosity and explores 'home' as being much more than a roof over our heads. Outdoors along the Esplanade Waterfront, Australia's Playable Streets brings the interactive installation *The Plants*, connecting our visitors to nature by inviting revellers to play the plants as musical instruments to create music with one another.

*Shining in Space* is a family musical adventure to space with an orchestra, storytelling and multimedia. An Esplanade Production, this concert experience is a collaborative creative undertaking by artists from diverse arts practices and ages.

Making sure that the arts is accessible to one and all, *March On 2024* features two productions with Relaxed Environment (RE) settings. A RE performance is perfect for anyone who benefits from being able to make a noise, leave and return to their seat or access the toilets during the performance. No modifications are made to the performance. These RE settings are available during selected performances of *Jungle Book reimagined* and *Shining in Space*.

The festival will continue to host the SEEDLINGS programme that brings together a group of enthusiastic and arts-loving young people aged 7 – 12 years to participate in various discussions and activities with artists. This year, participants of SEEDLINGS will also have public engagements with festival audiences. The spirited Tak Takut Kids Club children's community from Boon Lay will also return to the festival with a participatory life-drawing project *I Draw You, You Draw Me*.

Throughout the festival, there will be workshops for children, families, and caregivers conducted by SOMAYOKE and ARTFOLD. We also continue our partnership with ASSITEJ Singapore to put together professional development and industry-based discussions for educators and artists. This year's session will be on Tech x Tactility featuring artists from Australia's Playable Streets and Singapore artists. There will also be a lineup of free programmes and activities all around Esplanade for everyone to enjoy. Finally, we would like to thank our Principal Sponsor, Naturel for their generous support of *March On 2024*.

We hope the festival will inspire everyone to re-imagine, play, hope, and reach out for the shining stars in space. Let's *March On* towards a brighter world for us all!

Rachel Lim  
Producer, The Esplanade Co Ltd

## About Esplanade – Theatres on the Bay

Esplanade is Singapore's national performing arts centre. It hosts a year-round line-up of about 3,500 live performances and activities presented by Esplanade, its partners and hirers. As an arts centre for everyone, Esplanade also creates opportunities for seniors, youth, children and underserved communities to experience the arts. More than 70% of the shows that take place each year at the centre are free for all to enjoy.

Esplanade also brings the arts virtually to audiences in Singapore and beyond, through its diverse range of digital programmes on [Esplanade Offstage](#), an all-access backstage pass to the performing arts and guide to Singapore and Asian arts and culture, with videos, podcasts, articles, quizzes and resources.

The centre works in close partnership with local, regional and international artists to develop artistic capabilities and content, push artistic boundaries and engage audiences. Esplanade supports the creation of artistic content by commissioning and producing new Singapore and Asian work for the international stage. It also develops technical capabilities for the industry nationally.

Esplanade – Theatres on the Bay is operated by The Esplanade Co Ltd (TECL), which is a not-for-profit organisation, a registered Charity and an Institution of a Public Character. The Charity Council awarded TECL the Charity Governance Award – Special Commendation for Clarity of Strategy in 2016 and 2022, and the Charity Transparency Award from 2016 – 2023. Esplanade is Singapore's first Dementia-Friendly Arts Venue and a certified Dementia Go-To Point, as well as a guide/assistance dog friendly centre.

TECL receives funding support from Ministry of Culture, Community and Youth and its Community Programmes are supported by Tote Board Family, comprising Tote Board, Singapore Pools and Singapore Turf Club.

Visit [Esplanade.com](https://www.esplanade.com) for more information.

~ End ~

Issued by *The Esplanade Co Ltd*.

For more information, please contact:  
Gina Koh  
Manager, Marketing (Communications & Content)  
[kgina@esplanade.com](mailto:kgina@esplanade.com)

Florence Tan  
Manager, Arts Marketing  
[tflorence@esplanade.com](mailto:tflorence@esplanade.com)

## Annexe

Esplanade Presents

### **March On 2024**

#### **A Children's Festival**

6 – 17 Mar 2024

[www.esplanade.com/marchon](http://www.esplanade.com/marchon)

*March On* is Esplanade's new annual children's festival that explores relevant issues for the young through multi-disciplinary programmes and participatory arts experiences.



## **TICKETED PROGRAMMES**

Tickets on sale from 9 Jan 2024, Tue, 10am onwards.

### **An Esplanade Co-Production**

#### **Jungle Book reimagined**

Akram Khan Company (UK)

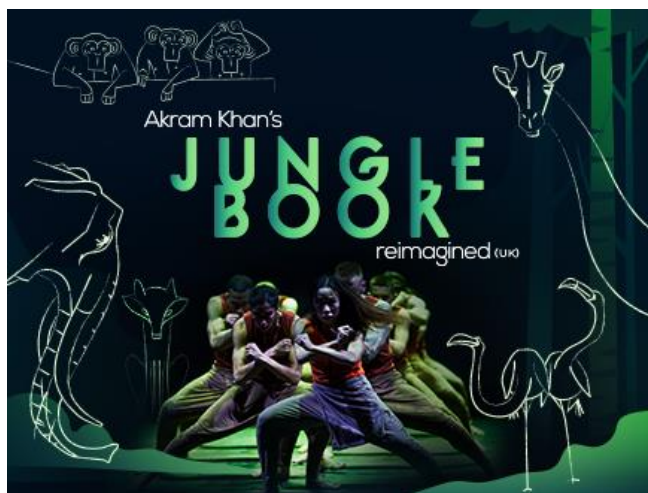
#### **6 – 9 Mar 2024, Wed – Sat**

6 & 7 Mar, Wed & Thu, 3pm (For schools only)

8 Mar, Fri, 7.30pm

9 Mar, Sat, 3pm (RE – Relaxed Environment)

Esplanade Theatre



Embark on a thrilling adventure in a future world ravaged by climate change. Join a family's escape to a modern city, where a child discovers allies among wild animals. Presented by one of the most celebrated and respected dance artists today, Akram Khan's *Jungle Book reimagined* is a captivating dance-theatre production that reinvents the journey of Mowgli through the eyes of a climate refugee.

Dive into a magical world with your family and celebrate the importance of belonging and respecting nature. Featuring an original score, 10 international dancers and state-of-the-art animation and visuals, *Jungle Book reimagined* is a beautifully compelling and vital piece of storytelling that is not to be missed.

Akram Khan is one of the most celebrated and respected dance artists today. With a career that spans 22 years, Akram Khan has created a body of work that has contributed significantly to the global arts landscape. His reputation has been built on the success of imaginative and highly accessible productions such as *Jungle Book reimagined*, *XENOS*, *Until the Lions*, and a highlight of his career being the creation of a section of the London 2012 Olympic Games Opening Ceremony. His collaborative spirit extends across disciplines and cultures, working with renowned figures from the National Ballet of China to Kylie Minogue.

Khan's work is recognised as being profoundly moving, in which his intelligently crafted storytelling is effortlessly intimate and epic. Beyond choreography, Khan has delved into documentaries, exploring dance on television. His illustrious career is marked by numerous

awards, an MBE for services to dance in 2005, and prestigious roles, including Chancellor of De Montfort University.

**Director/Choreographer** Akram Khan

**Creative Associate/Coach** Mavin Khoo

**Writer** Tariq Jordan

**Dramaturgical Advisor** Sharon Clark

**Composer** Jocelyn Pook

**Sound Designer** Gareth Fry

**Lighting Designer** Michael Hulls

**Visual Stage Designer** Miriam Buether

**Art Direction and Director of Animation** Adam Smith (YeastCulture)

**Producer/Director of Video Design** Nick Hillel (YeastCulture)

**Rotoscope Artists/Animators** Naaman Azhari, Natasza Cetner, Edson R Bazzarin

**Rehearsal Directors** Nicky Henshall, Andrew Pan, Angela Towler (Tour)

**Dancers** Lucia Chocarro, Tom Davis-Dunn, Harry Theadora Foster, Thomasin Gülgeç, Jasper Narvaez, Max Revell, Matthew Sandiford, Pui Yung Shum, Elpida Skourou, Holly Vallis, Jan Mikaela Villanueva, Luke Watson

**Producing Director** Farooq Chaudhry

**Executive Director** Isabel Tamen

**Project Manager** Mashitah Omar

**Co-produced by** Curve Leicester, Attiki Cultural Society – Greece, Birmingham Hippodrome, Edinburgh International Festival, Esplanade – Theatres on the Bay Singapore, Festspielhaus St. Pölten, Internationaal Theater Amsterdam, Joan W. and Irving B. Harris Theater for Music and Dance – Chicago, Lincoln Center for the Performing Arts – New York, Maison de la Danse / Pôle européen de création – Lyon, National Arts Centre – Canada, New Vision Arts Festival – Hong Kong, Orsolina28, Pfalzbau Bühnen – Theater im Pfalzbau Ludwigshafen, Romaeuropa Festival, Stanford Live / Stanford University, Teatros del Canal – Madrid, théâtre de Caen, Théâtre de la Ville – Paris.

The technical adaptation of *Jungle Book reimagined* is kindly supported by Les Théâtres de la Ville de Luxembourg.

With the support of Garfield Weston Foundation, Genesis Foundation and Angela Bernstein CBE.

Website: [www.akramkhancompany.net](http://www.akramkhancompany.net)

Facebook: [www.facebook.com/AkramKhanCompany](https://www.facebook.com/AkramKhanCompany)

Twitter: [www.twitter.com/akramkhanlive](https://www.twitter.com/akramkhanlive)

Instagram: [www.instagram.com/akramkhancompany](https://www.instagram.com/akramkhancompany)

(2hrs, including 15mins intermission)

Performed in English

Admission Age: 6

Recommended age: 8 & up

Ticket Price: \$40<sup>^\*</sup>, \$60<sup>^\*\*</sup>, \$80<sup>^</sup>

### **^Esplanade&Me Early Bird Specials**

Available 9 Jan – 14 Feb 2024.

PIP's Club: 20% savings

Black & White: 20% savings

Discover: 15% savings

**^Esplanade&Me Specials**

Available from 15 Feb 2024.

Black: 15% savings | White: 15% savings

PIP's Club & Discover: 10% savings (min. 2 tickets)

Family Fun Pass (For PIP's Club members): 15% savings (min. 4 tickets per show or across shows)

School Price: \$35 (Cat 2 only)

Limited concessions for Students, NSFs and Seniors: \$32\* & \$48\*\*

Limited concessions for PWDs: \$32

School specials available. For enquiries and booking, please contact Esplanade Box Office at [boxoffice@esplanade.com](mailto:boxoffice@esplanade.com) or 6838 8389.

**Tote Board Arts Grant**

All Primary, Secondary Schools, Junior Colleges/Centralised Institute & ITEs may use the Tote Board Arts Grant to subsidise up to 50% of the programme cost.

For more details, please contact Esplanade Box Office at [boxoffice@esplanade.com](mailto:boxoffice@esplanade.com) or 6838 8389.

**Relaxed Environment (RE)**

A Relaxed Environment (RE) performance is perfect for anyone who benefits from being able to make a noise, leave and return to their seat or access the toilets during the performance. No modifications are made to the performance.



**An Esplanade Production  
Shining in Space**

Featuring musicians from Yong Siew Toh Conservatory of Music and Singapore Youth Philharmonic Orchestra

Directed by Jeremy Leong and NONFORM (Singapore)

**9 Mar 2024, Sat**

2.30pm

Esplanade Concert Hall

(RE – Relaxed Environment)



Shining draws all her thoughts, feelings and memories into her very special notebook, and shares them with Star, her best friend who is a stuffed toy. One day, when an accident threatens to destroy her notebook, Star comes to life with an exciting offer—to embark on a wondrous intergalactic musical adventure together! Through orchestral music, storytelling and multimedia, join Shining as she creates fond memories, makes new friends, and unravels the mysteries of space!

**About Yong Siew Toh Conservatory of Music (YST) Orchestral Pedagogy Students**

YST students on stage comprise third year students enrolled in the course 'Pedagogy for Orchestral Instruments'. In this course, YST students learn about teaching, community engagement and leadership through guiding younger musicians in their instrumental performance journeys and performing side by side with them. In recent years, YST Orchestral Pedagogy students have worked alongside ensembles such as the Aurora Orchestra, DECODA and Lorong Boys, and mentored younger orchestras including Da Zhong Primary School Symphony Orchestra and the Kids' Philharmonic Orchestra.

Instagram: [www.instagram.com/Ystconservatory](https://www.instagram.com/Ystconservatory)

**About Singapore Youth Philharmonic Orchestra**

The Singapore Youth Philharmonic Orchestra (SYPO) is a dynamic ensemble committed to nurturing young musicians who possess a profound passion for classical music. These dedicated individuals are driven by their pursuit of excellence, actively striving to pursue advanced and professional paths in order to transform their musical aspirations into reality.



Membership in the orchestra is carefully curated through auditions. These musicians are trained to excel as soloists while also being adept team players within the orchestra. Through intensive training and dedicated practice, and with the expert guidance of esteemed educator and conductor Luo Wei, the SYPO is poised to embark on an exciting journey, promising to bring inspiration and delight to all who have the privilege of witnessing their artistic talents.

*Shining in Space* is SYPO's debut performance.

### **About Luo Wei**

Luo Wei, a distinguished YST alumnus, received his Bachelor of Music Degree in Violin Performance and Post-Graduate Diploma in Violin Performance in 2010. In 2018, he obtained a Master of Music degree in Conducting.

In 2012, Luo Wei co-founded Kid's Philharmonic@SG Orchestra and served as the founding Music Director, dedicated to training young children of various ages. In 2023, he also created the Singapore Youth Philharmonic Orchestra which focuses on training talented youths who aspire to regularly perform professional orchestra repertoire with like-minded peers.

### **About Jeremy Leong**

Scriptwriter and Co-director

Jeremy Leong has been playfully (and very seriously) making theatre since 2016 after he graduated from Lasalle College of the Arts, Singapore. He is passionate about creating theatrical experiences for young audiences and wears many, many, many hats. He writes, directs, produces, and performs. He is also the co-founder of Zip Zap Zoom Collective, an arts collective dedicated to creating participatory and imaginative theatrical experiences for young audiences.

Under the collective, and as an independent practitioner, Jeremy has created works with and for Esplanade – Theatres on the Bay, WILD RICE, The Artground, Children's Museum Singapore, National Museum of Singapore, and KidsSTOP (Science Centre).

He enjoys the creative and collaborative process of theatre-making.

Instagram: [www.instagram.com/zipzapzoom.collective/](http://www.instagram.com/zipzapzoom.collective/)

### **About NONFORM**

Co-direction, integrative multimedia visual, lighting and sound design

TZECHAR & Mervin Wong

NONFORM is a dynamic multidimensional creative agency, home to a collective of versatile and visionary multi-medium artists and aliens. NONFORM embraces a strategic approach to deconstruction, using creativity as a powerful tool for problem-solving. Their multidisciplinary approach enables them to navigate complex challenges and deliver cutting-edge solutions. They hope that working on this space project might help them return to their home planet.

Instagram: [www.instagram.com/mervinwong00](http://www.instagram.com/mervinwong00) & [www.instagram.com/tzechar.art](http://www.instagram.com/tzechar.art)

(1hr, no intermission)

Performed in English

Admission Age: 2

Recommended age: 5 to 8 years old

Ticket Price: \$25

**^Esplanade&Me Early Bird Specials**

Available 9 Jan – 14 Feb 2024.

PIP's Club: 20% savings

**^Esplanade&Me Specials**

Available from 15 Feb 2024.

PIP's Club & Discover: 10% savings (min. 2 tickets)

Family Fun Pass (For PIP's Club members): 15% savings (min. 4 tickets per show or across shows)

School specials available. For enquiries and booking, contact Esplanade Box Office at [boxoffice@esplanade.com](mailto:boxoffice@esplanade.com) or 6838 8389.

**Tote Board Arts Grant**

All Primary, Secondary Schools, Junior Colleges/Centralised Institute & ITEs may use the Tote Board Arts Grant to subsidise up to 50% of the programme cost.

For more details, please contact Esplanade Box Office at [boxoffice@esplanade.com](mailto:boxoffice@esplanade.com) or 6838 8389.

**Relaxed Environment (RE)**

A Relaxed Environment (RE) performance is perfect for anyone who benefits from being able to make a noise, leave and return to their seat or access the toilets during the performance. No modifications are made to the performance.

**An Esplanade Commission**  
**Caliban's Island**  
Void Deck Games

**8 – 17 Mar 2024, Fri – Sun**

No show on 11 & 12 Mar, Mon & Tue

11am & 4pm

Various locations. Starting point: Esplanade Basement 2 Carpark Foyer



A group of shipwrecked children embark on a daring quest to reverse a malevolent curse that has transformed adults into strange animal hybrids. Guided by the enigmatic sorcerer Prospero, they must gather four extraordinary ingredients from an enchanted, mysterious island to brew a potion of transformation. The fate of the adults now rests in their hands.

*Caliban's Island* is an interactive play where audiences play characters and advance the story by making challenging choices and completing quests around Esplanade. Inspired by *The Tempest* by William Shakespeare, *Caliban's Island* tells a powerful tale of redemption, sacrifice and the enduring bond between adults and children.

**About Void Deck Games**

Void Deck Games is an immersive theatre company that explores audience agency in narratives through gamified story structures and casting audiences as characters.

Our focus is on people, and we design experiential stories that beckon participants to play an active role in co-creation and see imaginary worlds through the eyes of a character. The audience is a co-conspirator, never a passive observer. Through drama and negotiation, they collectively decide the story outcomes and make meaning from their artistic experience.

We seek to inspire empathy, communication and positive change in Singaporean culture by reconnecting communities and people through collaborative play experiences.

Website: [www.voiddeckgames.com/](http://www.voiddeckgames.com/)  
Instagram: [www.instagram.com/voiddeckgames](https://www.instagram.com/voiddeckgames)  
Facebook: [www.facebook.com/voiddeckgames](https://www.facebook.com/voiddeckgames)  
YouTube [www.youtube.com/@voiddeckgames769](https://www.youtube.com/@voiddeckgames769)

(1hr 30mins, no intermission)

Performed in English

Admission Age: 5

Recommended Age: 7 & up

Ticket Price: \$30

All children must be accompanied by an adult. Adult must be at least 16 years old. Tickets are required for each attendee.

**^Esplanade&Me Early Bird Specials**

Available 9 Jan – 14 Feb 2024.

PIP's Club: 20% savings

**^Esplanade&Me Specials**

Available from 15 Feb 2024.

PIP's Club & Discover: 10% savings (min. 2 tickets)

Family Fun Pass (For PIP's Club members): 15% savings (min. 4 tickets per show or across shows)

Note: There is strictly no admission for latecomers as there is a briefing before the performance and players/supporters are required to follow the sequential steps during the performance.

**An Esplanade Commission**  
**Aki's Playground**  
PLAY!

**14 – 17 Mar 2024, Thu – Sun**  
11am to 2pm, 3pm to 6pm  
Esplanade Annexe Studio



Welcome to *Aki's Playground*, where adventurers of all ages are invited to embark on an enthralling journey across three magical realms. Immerse yourself in a multi-sensory, interactive experience, that will tickle the imagination and soothe the senses. Traverse mystical forests, journey across cosmic galaxies, and unearth oceanic treasures in interactive light and sound displays, alongside carefully curated workshops. Join us and partake in an enchanting adventure tailored for every adventurer, both young and young at heart. *Aki's Playground* awaits, promising an exploration beyond your imagination!

**About PLAY!**

PLAY! is an artist collective that curates workshops, performances and experiences with play as the central focus. Our programmes encourage participants to engage with the world around us, with a childlike curiosity. PLAY! was born out of the desire to show that art doesn't always have to be serious, and a large part of art making is to allow ourselves freedom to respond to the space in which we are making our art. Our strongest desire is to engage the public to participate through creation: we provide the tools for our guests, allowing them to transform into artists themselves.

Website: [www.anyhowplayplay.com/](http://www.anyhowplayplay.com/)

Instagram: [www.instagram.com/anyhowplayplay/](https://www.instagram.com/anyhowplayplay/)

(Approximately 45mins, free & easy)

Performed in English

Admission Age: 0

Recommended Age: 3 to 8 years

Ticket Price: \$15

All children must be accompanied by an adult. Adult must be at least 16 years old. Tickets are required for each attendee.

Note: Patrons may enter any time within the timed slot stated on their tickets. Last admission will be 45mins before the end of each slot. For example, patrons who purchased tickets for the 11am to 2pm slot may enter the space between 11am to 1.15pm.

**^Esplanade&Me Early Bird Specials**

Available 9 Jan – 14 Feb 2024.

PIP's Club: 20% savings

**^Esplanade&Me Specials**

Available from 15 Feb 2024.

PIP's Club & Discover: 10% savings (min. 2 tickets)

Family Fun Pass (For PIP's Club members): 15% savings (min. 4 tickets per show or across shows)



## HOME

Theatre Madam Bach (Denmark)

**7 – 10 Mar 2024, Thu – Sun**

Thu & Fri, 11am & 4pm

Sat & Sun, 11am, 2pm & 4pm

Esplanade Annexe Studio



Immerse your little ones in a journey of self-discovery in this captivating visual theatre experience about belonging and feeling at home—in the world and in oneself. *Home* is a performance that will spark curiosity and invite children to explore the profound concept of "home" as more than just a physical space.

In a world where many are constantly on the move, *Home* becomes a poignant reflection on finding one's place in the world. Join us and uncover the magic of what it means to be home.

### **About Theatre Madam Bach**

Theatre Madam Bach is a world traveling artistic theatre for children founded in 1997.

They create visual theatre for children between ages 0 – 6. Through rich imagery, captivating soundscapes, and a poetic use of words, their theatre performances speak to the senses in a language where the child feels at home. Madam Bach's shows often branch out in other formats too—music, illustrated books, workshops or art projects that promote creativity and curiosity, and encourage children to engage beyond the theatre experience itself.

Creative learning is an important part of the work and that is why Pernille and Christian have built up a brand new art space and knowledge base in Denmark for developing shows, art projects, artists-in-residencies and exploring Theatre for Early Years (TEY) with artists from all over the world.

### **About Christian Schrøder**

Artistic director, actor and musician

Christian's versatility as a musician, actor, composer and singer-songwriter has been a creative force in all of Madam Bach's productions. International exchange and collaboration are cornerstones in Theatre Madam Bach's work.

### **About Pernille Bach**

Concept developer, creative/visual artist and actress

Pernille's experience, creativity and unique ability to be in tune with children are a key to the success of Theatre Madam Bach. She has achieved a milestone with 150 performances in China and tours in 42 countries with her shows and workshops.

(45min, no intermission)

Performed in English

Admission Age: 0

Recommended Age: 3 to 7 years

Ticket Price: \$30

All children must be accompanied by an adult. Adult must be at least 16 years old. Tickets are required for each attendee.

### **^Esplanade&Me Early Bird Specials**

Available 9 Jan – 14 Feb 2024.

PIP's Club: 20% savings

### **^Esplanade&Me Specials**

Available from 15 Feb 2024.

PIP's Club & Discover: 10% savings (min. 2 tickets)

Family Fun Pass (For PIP's Club members): 15% savings (min. 4 tickets per show or across shows)

## **TICKETED WORKSHOPS**

### **HOME (Parent-Child Workshop)**

Madam Theatre Bach (Denmark)

**11 & 12 Mar, Mon & Tue**

10am & 2pm

Esplanade Bay Room



Based on the performance of *HOME* by Theatre Madam Bach, awaken your child's curiosities and creativity in this workshop that explores the concept of—and what it means to be—home.

Let your child's imagination soar as they try their hand on crafting their own unique houses to the accompaniment of live music and songs brought to life through expressive movements.

#### **About Theatre Madam Bach**

Theatre Madam Bach is a world traveling artistic theatre for children founded in 1997.

They create visual theatre for children between ages 0 – 6. Through rich imagery, captivating soundscapes, and a poetic use of words, their theatre performances speak to the senses in a language where the child feels at home. Madam Bach's shows often branch out in other formats too—music, illustrated books, workshops or art projects that promote creativity and curiosity, and encourage children to engage beyond the theatre experience itself.

Creative learning is an important part of the work and that is why Pernille and Christian have built up a brand-new art space and knowledge base in Denmark for developing shows, art projects, artists-in-residencies and exploring Theatre for Early Years (TEY) with artists from all over the world.

#### **About Christian Schrøder**

Artistic director, actor and musician

Christian's versatility as a musician, actor, composer and singer-songwriter has been a creative force in all of Madam Bach's productions. International exchange and collaboration are cornerstones in Theatre Madam Bach's work.

#### **About Pernille Bach**

Concept developer, creative/visual artist and actress

Pernille's experience, creativity and unique ability to be in tune with children are a key to the success of Theatre Madam Bach. She has achieved a milestone with 150 performances in China and tours in 42 countries with her shows and workshops.

(45min, no intermission)

Conducted in English

Recommended Age: 7 – 12 years old

Ticket Price: \$20

Tickets are sold in twos (1 adult + 1 child) or threes (1 adult + 2 children or 2 adults + 1 child).  
Accompanying adult must be at least 16 years old. Tickets are required for each attendee.

**^Esplanade&Me Early Bird Specials**

Available 9 Jan – 14 Feb 2024.

PIP's Club: 50% savings (limited tickets)

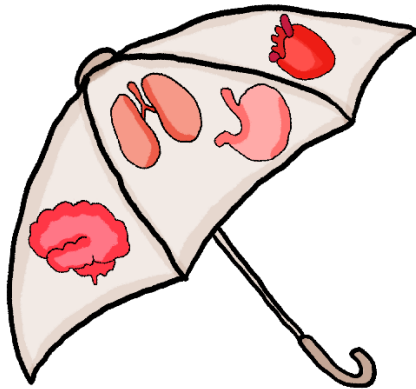
**^Esplanade&Me Specials**

Available from 15 Feb 2024.

Family Fun Pass (For PIP's Club members): 15% savings (min. 4 tickets per show or across shows)

**Come Under My Umbrella**  
**(Caregiver – Child Workshop)**  
SOMAYOKE x ARTFOLD

**9 Mar 2024, Sat, 4pm**  
Esplanade Rehearsal Studio



*Come Under my Umbrella* is a family workshop that invites caregivers and children to explore the concept of the body as a shelter. Through engaging games, reflections, and expressive body movements, we create a safe and nurturing space for children to delve into potential threats they may encounter and discover what they need to feel safe. At the same time, caregivers are encouraged to reflect on their role as a shelter, and the importance of self-care.

This interactive session also promotes open discussion on body safety, empowering both children and adults to understand and assert personal boundaries. Through the workshop, families will learn how to foster an environment, listen to their bodies and trust their body wisdom.

As a meaningful takeaway, each caregiver-child group will have the opportunity to engage in collaborative art-making, personalising their own umbrella, symbolising a physical and metaphorical shelter that can protect them from life's inevitable storms.

**About ARTFOLD**

Ivy is a co-founder of ARTFOLD, a safe creative space that offers art therapy, therapeutic art activities and workshops for individuals, corporate and social service organisations. As an accredited psychotherapist and social worker, she has journeyed with children and families, processing complex traumatic events and making sense of their world through the awe-inspiring healing powers of art-making.

Website: [www.artfold.sg/](http://www.artfold.sg/)

**About SOMAYOKE**

Yoke Wen has journeyed with vulnerable children, adults, and families over the past decade as a trauma-informed facilitator, trainer, and writer. She founded SOMAYOKE in 2019 to facilitate safe spaces for trauma healing for children, teens, adults, and communities. SOMAYOKE offers therapeutic services, trauma training, and consultation using body-based perspectives and tools to explore safety and healing in mind, body, and breath. Connecting with children has always brought tremendous joy and she enjoys doing this using their language—fun and play!

Website: [www.somayoke.com/](http://www.somayoke.com/)

(2hrs, no intermission)

Conducted in English

Admission Age: 6 years old

Recommended age: 6 – 10 years old

Ticket Price: \$20

Tickets are sold in twos (1 adult + 1 child) or threes (1 adult + 2 children or 2 adults + 1 child).  
Accompanying adult must be at least 16 years old. Tickets are required for each attendee.

**^Esplanade&Me Early Bird Specials**

Available 9 Jan – 14 Feb 2024.

PIP's Club: 50% savings (limited tickets)

**^Esplanade&Me Specials**

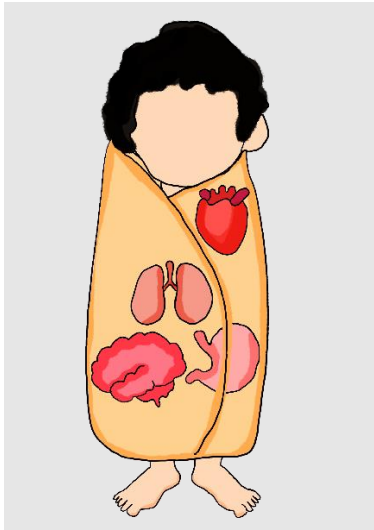
Available from 15 Feb 2024.

Family Fun Pass (For PIP's Club members): 15% savings (min. 4 tickets per show or across shows)



**A Shelter for All of Me  
(Children-only Workshop)**  
SOMAYOKE x ARTFOLD

**16 Mar 2024, Sat, 4pm**  
Esplanade Rehearsal Studio



*A Shelter for All of Me* is a children's workshop that uses different approaches to help children explore their own bodies, which serve as lifelong shelters. Our body constantly communicates with us through messages like "*Look out! This person is hurting you*" or "*I like this place because I feel safe here.*" By attentively listening to these messages, children can deepen their relationship with their bodies.

Through storytelling, games, art-making, and movement, children will learn how their body protects them, even when they feel uncomfortable and uneasy with what their bodies are telling them. The workshop will help them understand and trust their body's wisdom, especially when dealing with feelings of fear and anxiety. Participants will also practise important skills like setting boundaries and understanding consent, empowering them with the tools to take action to keep themselves safe.

**About ARTFOLD**

Ivy is a co-founder of ARTFOLD, a safe creative space that offers art therapy, therapeutic art activities and workshops for individuals, corporate and social service organisations. As an accredited psychotherapist and social worker, she has journeyed with children and families, processing complex traumatic events and making sense of their world through the awe-inspiring healing powers of art-making.

Website: [www.artfold.sg/](http://www.artfold.sg/)

**About SOMAYOKE**

Yoke Wen has journeyed with vulnerable children, adults, and families over the past decade as a trauma-informed facilitator, trainer, and writer. She founded SOMAYOKE in 2019 to facilitate safe spaces for trauma healing for children, teens, adults, and communities. SOMAYOKE offers therapeutic services, trauma training, and consultation using body-based perspectives and tools to explore safety and healing in mind, body, and breath. Connecting with children has always brought tremendous joy and she enjoys doing this using their language—fun and play!

Website: [www.somayoke.com/](http://www.somayoke.com/)

(2hrs, no intermission)

Conducted in English

Admission Age: 7 years old

Recommended age: 8 & up

Ticket Price: \$20

Children-only workshop. Parents/caregivers can drop their child off 10mins before the workshop. The pick up after the session will be at the same location.

**^Esplanade&Me Early Bird Specials**

Available 9 Jan – 14 Feb 2024.

PIP's Club: 50% savings (limited tickets)

**^Esplanade&Me Specials**

Available from 15 Feb 2024.

Family Fun Pass (For PIP's Club members): 15% savings (min. 4 tickets per show or across shows)

**Musical Plants  
(Parent-Child Workshop)**  
Playable Streets (Australia)

**14 – 16 Mar 2024, Thu – Sat**

14 Mar 2024, Thu, 10am

15 & 16 Mar 2024, Fri & Sat, 10am & 2pm

Esplanade Rehearsal Studio



Experience the amazing fusion of music, nature and technology in this parent-child workshop where ordinary house plants turn into extraordinary musical companions.

*The Plants* is a high-tech interactive installation that transforms regular plants into dynamic musical instruments. In this workshop, participants will be introduced to *The Plants* and explore different ways of playing them. Through a series of creative exercises that involve music-making, drawing, design, and technology, participants will be led to create new musical compositions of their own. No prior musical experience is necessary!

**About Playable Streets**

Playable Streets is a participatory arts company that engages and reconnects communities through collaborative art in public spaces, homes, and online. The company is made up of a team of theatre-makers, visual artists, designers, engineers, and composers creating site-specific installations that transform public spaces, interactive art books, and online experiments. Playable Streets has created a series of works that explores public collaboration and collective play. They work with communities to tell their stories in new ways and also present workshops for a diverse range of participants exploring the intersections of music, technology, art, and design.

Website: [www.playablestreets.com/](http://www.playablestreets.com/)

Instagram: [www.instagram.com/playablestreets/](https://www.instagram.com/playablestreets/)

(1hr, no intermission)

Conducted in English

Admission Age: 5 years old

Recommended age: 5 to 12 years old

Ticket Price: \$20

Tickets are sold in twos (1 adult + 1 child) or threes (1 adult + 2 children or 2 adults + 1 child). Accompanying adult must be at least 16 years old. Tickets are required for each attendee.

**^Esplanade&Me Early Bird Specials**

Available 9 Jan – 14 Feb 2024.  
PIP's Club: 50% savings (limited tickets)

**^Esplanade&Me Specials**

Available from 15 Feb 2024.  
Family Fun Pass (For PIP's Club members): 15% savings (min. 4 tickets per show or across shows)

## **FREE PROGRAMMES HIGHLIGHTS**

### **The Plants**

Playable Streets (Australia)

**7 – 10 & 14 – 17 Mar 2024, Thu – Sun**

5pm – 8pm, performance at 7pm

The Lawn, Singtel Waterfront Theatre @ Esplanade



Have you made music with a marigold? Composed with a chrysanthemum? Or listened to some lavender?

Connect with nature! Reach out and touch real plants to play these unique organic instruments. *The Plants* are new experimental musical instruments that combine organic matter and bespoke digital sensors developed by Playable Streets. For the first time, these plant-based instruments are available for the public to play and create new live compositions.

Swelling with textural waves and phasing rhythmic movement, *The Plants* will be unlike any musical instrument you have ever seen, heard or played. *The Plants* installation is open to everyone to interact with, explore, and make new collaborative compositions.

### **About Playable Streets**

Playable Streets is a participatory arts company that engages and reconnects communities through collaborative art in public spaces, homes, and online. The company is made up of a team of theatre-makers, visual artists, designers, engineers, and composers creating site-specific installations that transform public spaces, interactive art books, and online experiments. Playable Streets has created a series of works that explores public collaboration and collective play. They work with communities to tell their stories in new ways and also present workshops for a diverse range of participants exploring the intersections of music, technology, art, and design.

Website: [www.playablestreets.com/](http://www.playablestreets.com/)

Instagram: [www.instagram.com/playablestreets/](https://www.instagram.com/playablestreets/)

## **I Draw You, You Draw Me**

3Pumpkins and Tak Takut Kids Club

**8 – 10 & 15 – 17 Mar 2024, Fri – Sun**

5pm – 9pm

Esplanade Courtyard Green

Join the community of Tak Takut Kids Club in some life-drawing! Express yourselves and connect with others through the act of drawing others and of being drawn by others.

### **About Tak Takut Kids Club (TTKC)**

Tak Takut Kids Club (TTKC) is a children and youth centre in Boon Lay Drive initiated by 3Pumpkins, a socially engaged arts organisation. Through innovative outreach and development programmes that use collaborative and participatory approaches, TTKC aims to build and provide a happier and safer environment for young persons in vulnerable circumstances to develop and grow. 3Pumpkins is a key partner of Comlink@Jurong West in the exploration of upstream interventions in integrated support.



## SEEDLINGS

Jan – Mar 2024

Various venues



SEEDLINGS is back this year with a special alumni-only edition! We bring together SEEDLINGS alumni from every run of the programme since its pilot in 2021, all of whom are highly-experienced festival goers who have had wide-ranging behind-the-scenes access to the *March On* programming team as well as festival programmes and artists. In 2024, they return with a vengeance, creating their own time traveling installation about SEEDLINGS and beyond that will be displayed at the Esplanade Concourse during this year's *March On*.

On 16 Mar 2024, Sat, SEEDLINGS alumni will also be at the installation, running a public programme for festival goers of any age (with pre-registration). What will the installation and public programme be like? Only time will tell...

SEEDLINGS is a child-centred artistic experience within the *March On*. Designed and led by arts practitioners Chong Gua Khee and Faye Lim (Rolyoly Family), the programme brings together a small, diverse group of enthusiastic and arts-loving children, to engage and respond to the festival's programming. SEEDLINGS activities include games, workshops, dialogues with programmers and artists, open rehearsals, and watching *March On* programmes.

More details about SEEDLINGS can be found in these *Esplanade Offstage* articles for [SEEDLINGS 1.0 \(2021\)](#) and [SEEDLINGS 2.0 \(2022\)](#).

More information about the programmes will be released soon.

Last updated: 9 Jan 2024