



ESPLANADE

THEATRES ON THE BAY

Singapore's National Performing Arts Centre



WELCOME TO ESPLANADE – THEATRES ON THE BAY

As you step under our twin domes along the Marina Bay waterfront, you will find people from all walks of life experiencing the arts and our spaces. Through the day, you may see students trooping through our foyer spaces on guided visits or to participate in our regular *Feed Your Imagination* series of performances specially created for them. Turn a corner and you find tourists snapping wefies against the backdrop of our visual arts installations and outdoor sculptures, or groups of seniors on a leisurely afternoon out, studying our programme boards or still humming the evergreen tunes from our monthly *Coffee Morning & Afternoon Tea* concerts. As night falls, friends and couples gather in our venues. They savour everything from adrenaline-pumping rock music, soothing jazz to a whole spectrum of dance and theatre. On weekends, families pack the centre: dining in one of our many restaurants, hanging out at our rooftop garden and children’s activity space PIP’s PLAYbox, or simply enjoying a free performance in our Outdoor Theatre.

Behind all this, lies our vision to be an arts centre for everyone. This vision is an enduring one. The world and Singapore have changed dramatically since Esplanade opened its doors on 12 October 2002, and there will be more changes in the years to come. But we at Esplanade continue to believe that the arts can touch every single person—regardless of age, culture or background—in a very special way. We welcome several million visitors each year, and present performances all year round, 70 per cent of which are free. Much of the rest is offered at subsidised ticket prices, so that great art can be experienced by as many as possible. All this is thanks to the unflagging support of the Ministry of Culture, Community and Youth, the Singapore Totalisator Board, and our sponsors and donors, to whom we are deeply grateful.

We are a platform for Asian arts to the world at large, working alongside our counterparts in the region to produce original works that speak of who we are and where we come from. Our new mid-sized theatre along our waterfront, ready in 2021, is poised to nurture the next generation of Singapore artists and audiences, and present more inspiring performances from around the world.

At the same time, we are going all out to create new ways for the arts to impact communities who may not always have the opportunity to encounter the arts or visit Esplanade. This includes families and seniors from less privileged backgrounds, migrant workers in crisis, at-risk youth and those with special needs. One migrant worker, while here for a pulsating bhangra performance—complete with audience participation—at *Kalaa Utsavam – Indian Festival of Arts*, summed up his experience, “Tonight, problem all forget already”. An alumnus from our *Songwriting for Hope* project with the Singapore Girls’ Home returned the next year to guide and encourage the new participants because she now wants “to be the person to spark a change in their lives”. Be it a memory triggered, a story that moved, words or music that soothed or inspired, a new provocation or an understanding of another culture, I believe the arts can make these powerful connections deep within a person or between people. The experience can be liberating and even transformative.

We invite you to explore Esplanade. May you discover new worlds and connections through the arts, just like many others who already have.

Yvonne Tham
Chief Executive Officer



VISION & MISSION

OUR VISION

Esplanade - Theatres on the Bay is a performing arts centre for everyone. We will be internationally recognised for our creativity and sense of adventure. We will set exceptional standards of service that will position us as a world leader.

OUR MISSION

To entertain, engage, educate and inspire.

THE ESPLANADE STORY

1970s

The idea of a national arts centre for Singapore was conceived.

1987

First design brief for the arts centre was formulated, with input from the arts community.

1989

The Advisory Council on Culture and the Arts released its report, which included a recommendation for the creation of “a world-class performing arts centre”.

1994

The first public exhibition of Esplanade’s architectural plans was held and the arts centre was named Esplanade – Theatres on the Bay.

The Esplanade project was redesigned in phases: Phase 1 comprised the Theatre, Concert Hall, studios, rehearsal and commercial spaces. Medium-sized theatres were to be built in Phase 2.

1996

Groundbreaking Ceremony.

2001

Topping Out Ceremony.

2002

Esplanade opened officially on 12 October 2002, followed by a three-week long *Opening Festival*.

Two cultural festivals were launched to galvanise each ethnic community through the arts during festive occasions. The festivals were *Kalaa Utsavam – Indian Festival of Arts* to celebrate Deepavali and *Pesta Raya – Malay Festival of Arts* to celebrate Hari Raya Puasa.

2003

Third cultural festival, *Huayi – Chinese Festival of Arts*, launched to celebrate the Lunar New Year.

The
Next
Stage

2018

Singtel donated S\$10 million towards the development of Esplanade’s new waterfront theatre, the largest single donation the arts centre has received since it opened.

2017

Esplanade announced its plans to build a new 550-seat theatre along its waterfront, to support its next stage of development.

In October, Esplanade launched #mydurian—a year-long celebration for its 15th anniversary—comprising programmes and activities that bring together people and stories that have helped shape the arts centre fondly dubbed the Durian.

2015

Esplanade put Singapore artists at the forefront of its programmes to commemorate Singapore’s 50th birthday.

2012

Esplanade commemorated its 10th Anniversary with the year-long theme *Celebrating Life – The best of the Human Spirit through the Arts*. The centre’s anniversary weekend in October was dedicated to celebrating Singapore arts and artists.

2003-2012

Esplanade ramped up its annual arts offerings with the launch of various key festivals and programme series.

These include genre-focused festivals such as *A Tapestry of Sacred Music*, *Baybeats*, *Mosaic Music Festival* and

da:ns festival; festivals for various demographics including *Octoburst!* for children and *A Date With Friends* for seniors; as well as monthly free concert series *Beautiful Sunday*, which takes place in the Esplanade Concert Hall.



OUR PROGRAMMES

There's something for everyone! Esplanade's diverse programmes encompass music, dance, theatre and visual arts, with a special focus on community access and arts education.

Our year-round calendar of *Esplanade Presents* programmes is complemented by hirers' programmes and programmes which are presented in partnership with commercial presenters and sponsors.

COMMUNITY PROGRAMMES

Our cultural arts festivals presenting some of Asia's finest artists are among the high points of our calendar. Celebrate the Lunar New Year with *Huayi – Chinese Festival of Arts*, Deepavali with *Kalaa Utsavam – Indian Festival of Arts*, and Hari Raya Puasa with *Pesta Raya – Malay Festival of Arts*. We also bring different communities together through the arts during *A Tapestry of Sacred Music* and festive occasions such as New Year's Eve and National Day.

All year round, Esplanade's free music programmes such as *Jazz in July*, *Cool Classics* and *Beautiful Sunday* attract sizeable crowds, entertain with different genres of music and ensure that the arts are accessible to all.

Other regular series include *Coffee Morning & Afternoon Tea* and *Songs We Grew Up With*, featuring nostalgic hits performed by Singapore singers and musicians.

Schools and families with young children have much to feast on with our *Feed Your Imagination (F.Y.I)*, *Limelight* and *PLAYtime!* series which expose younger audiences to different art forms, invite their participation or raise their awareness of different cultures and social issues.

In our *Community Engagement* programmes, we work closely with artists and social service organisations to bring transformative and meaningful arts experiences to seniors, children, youth, migrant workers and those with special needs.



AUDIENCE DEVELOPMENT

Through innovative, in-depth programming, our festivals and programmes add to the overall vibrancy of Singapore's arts scene. To inspire our artists and audiences, we regularly present performances by some of Singapore's and the world's finest artists, taking audiences on a journey from the fun and interactive side of the arts to works by some of the most exciting and cutting-edge artists.

Deep dive into specific genres through festivals and programme series such as **Baybeats**, Singapore's

largest free alternative music festival; **da:ns festival** and **da:ns series**, which present dance works ranging from the classical to the contemporary by celebrated dancemakers; as well as **Mosaic Music Series** and **Classics** series featuring the finest contemporary music artists and world-class orchestras.

Visitors to Esplanade will also find much to explore in the curated quarterly **Visual Arts** exhibitions and public art works in unusual spaces around the centre.



ARTS & INDUSTRY DEVELOPMENT

Esplanade is committed to collaborating with artists and arts groups in presenting, commissioning and producing new works. **The Studios** programme series is a platform for artists to create original works of theatre. We also regularly commission and present new work for our cultural and genre-focused festivals such as **Huayi**, **Kalaa Utsavam**, **Pesta Raya** and **da:ns festival**. In addition, we create opportunities for Singapore artists to work with their regional and international counterparts.

During our festivals and programmes, we organise workshops, post-performance talks, meet-the-artist sessions and masterclasses so audiences and aspiring artists can delve deeper into the arts.

Esplanade's mentorship programmes such as the **Baybeats Budding Bands** programme and **Mosaic Jazz Fellows** support young and emerging artists, while programmes such as the **Mosaic Associate Artist** initiative support our talented musicians in taking their art to the next stage.

To ensure a continuous pipeline of skilled technical crew for the arts and entertainment industry in Singapore, Esplanade has developed a range of technical theatre training programmes for the creative industry. The centre is an Approved Training Organisation (ATO) of SkillsFuture Singapore.

PERFORMANCE VENUES



1



2



3

1) ESPLANADE CONCERT HALL
Esplanade's crown jewel boasts superb acoustics and is one of only five halls in the world with similar state-of-the-art acoustic features. These features allow the 1,630 seat Concert Hall (with an additional 197 seats in the gallery) to be adapted for different music performances, be it orchestral, choral, cultural, or even a rock concert, producing optimum sound at every concert.

2) ESPLANADE THEATRE
Modelled on the traditional horseshoe-shaped performance arenas and with a seating capacity of 1,950, the Theatre creates an intimate space that draws the audience and artists on stage closer together. Four levels of seats face the stage designed for the presentation of Asian and Western performing arts, with an adjustable orchestra pit that can hold about 100 musicians.

**3) WATERFRONT THEATRE
(COMING SOON)**
A new mid-sized theatre along Esplanade's waterfront with a capacity of at least 550 seats. It will be semi-flexible in both stage and seating layout and it will enable Esplanade to address expanding audience numbers and growing artistic needs. Construction will start in 2019 and complete in 2021.



4



5



6

4) ESPLANADE RECITAL STUDIO
The fan-shaped Recital Studio, which seats up to 245 people, is an ideal venue for music performances such as chamber music and solo recitals, cabaret shows and jazz concerts. In addition to its timber flooring, the studio's wall and ceiling finishes are specifically designed to ensure that the space has good acoustics.

5) ESPLANADE THEATRE STUDIO
An intimate setting for experimental theatre and dance presentations, the Theatre Studio is a highly flexible performance space. It offers various configurations with retractable seating that can accommodate up to 220 people. Equipped with highly adaptable staging, lighting and sound systems, it can meet different staging demands.

6) ESPLANADE ANNEXE STUDIO
A raw space for artists to collaborate, experiment and create. Here, artists can perform in an informal setting, rehearse and create work, and also hone their craft through Esplanade's mentorship opportunities. The Annexe Studio has a standing capacity of up to 450 people across two floors.

ARTS ALL DAY, EVERY DAY

1) ESPLANADE CONCOURSE

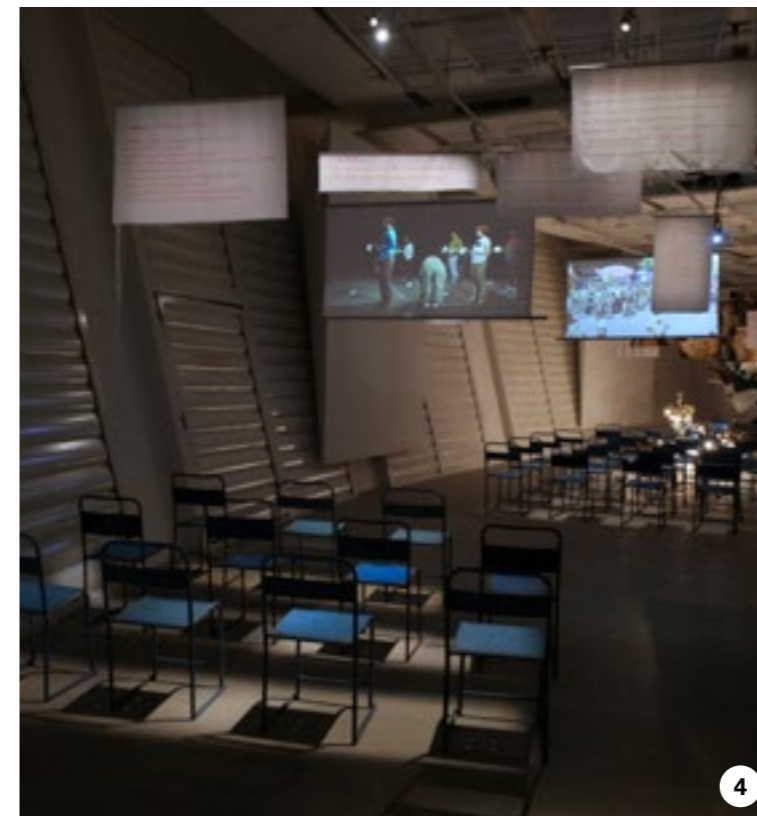
The Concourse includes a central visual arts space where commissioned site-specific installations are displayed throughout the year. The Upper Concourse also has a stage that hosts free arts performances daily.

2) ESPLANADE OUTDOOR THEATRE

Overlooking the 300m-long waterfront along Marina Bay, the Outdoor Theatre can seat 450 people and accommodate up to 600 standing. The space hosts a range of free performances on weekends and public holidays, from music to dance and theatre, that can be enjoyed under a starlit sky.

3) PIP'S PLAYBOX

PIP's PLAYbox is a dedicated space for young arts lovers and their families to discover and participate in imaginative play. The space hosts a range of activities including storytelling sessions and self-guided activities, and also includes a reading corner and an outdoor play area.



4) JENDELA (VISUAL ARTS SPACE)

"Jendela", the Malay word for "window", aptly describes this exhibition space with a long wall of louvred windows that look out towards Marina Bay. It showcases a regular line-up of visual arts exhibitions.

5) ESPLANADE TUNNEL

This 85m-long passageway features a regular line-up of visual arts exhibitions, and allows visitors easy and sheltered access to Esplanade from CityLink Mall, Esplanade MRT and City Hall MRT.

6) ESPLANADE COMMUNITY WALL

The Community Wall showcases visual arts exhibitions by artists.

A GREEN CENTRE



1) ESPLANADE FORECOURT GARDEN

Located at the main entrance of Esplanade, this lush garden is home to a variety of trees and plants, most of which are indigenous to the region. Here, you'll find the Gelam Tree, Sea Tristania, Yellow Rain Tree and Rainbow Gum Tree with its colourful bark. Along the pathways, you'll see tall grass that was once found in kampungs.

Water features and benches make for a relaxing environment—an oasis in the heart of the civic and cultural district. The Forecourt Garden has also played host to free performances as part of our various festivals and programmes.



2) ESPLANADE ROOF TERRACE

With panoramic views of the city and Marina Bay, the Roof Terrace is the perfect space to enjoy sights of Marina Bay and Singapore's skyline. It is a popular spot among Singaporeans and foreign visitors. There is landscaping with manicured lawns, shrubbery and small trees, complemented by seating areas, so that visitors can rest or find the perfect photo opportunity.



MORE ABOUT THE ARTS



1) PASSAGES – THE ESPLANADE STORY

A public exhibition space in the Esplanade Concourse that enjoys natural lighting in the day, *Passages* tells the story of Esplanade's history and its place in the development of the arts in Singapore.

2) TRIBUTESG

This exhibition space in the Esplanade Concourse honours pioneers who have contributed significantly to the development of the arts in Singapore. It also lives online on www.esplanade.com/tributesg where you can find the stories of over 200 Singapore arts pioneers.

3) WWW.ESPLANADE.COM

Find out what's on at Esplanade, one of the world's busiest performing arts centres, and book tickets for shows through our website. On www.esplanade.com/learn, you'll uncover perspectives and videos to plug you into new experiences of the arts in Singapore and Asia, including resources for educators and students.

4) LIBRARY@ESPLANADE

The National Library Board manages Singapore's first dedicated performing arts library, located on Level 3 of the Esplanade Mall. The library houses an extensive range of arts-related reference books and a multimedia collection.



ARTIST FACILITIES

1) ESPLANADE REHEARSAL STUDIO

Similar in size to the Esplanade Theatre stage, the Rehearsal Studio is an ideal rehearsal space for major productions. It is specifically designed for dance rehearsals and pre-performance warm-up sessions.

With full glass windows which let in natural light and a spectacular view of the bay, it is also a lovely setting for performance workshops for artists or members of the public.

2) GREEN ROOM

The backstage Green Room is a regular fixture of performance spaces around the world. At Esplanade, it is where artists and crew interact over meals.



1



3



2



4

3) DRESSING ROOMS

Esplanade's backstage areas include a total of 42 dressing rooms of various sizes that cater to the needs of artists.

4) CONCERT HALL LOUNGE

The Concert Hall Lounge is located backstage and close to the Esplanade Concert Hall. It is where artists can gather to mix and mingle, beyond the confines of their dressing rooms.

HOSPITALITY SPACES

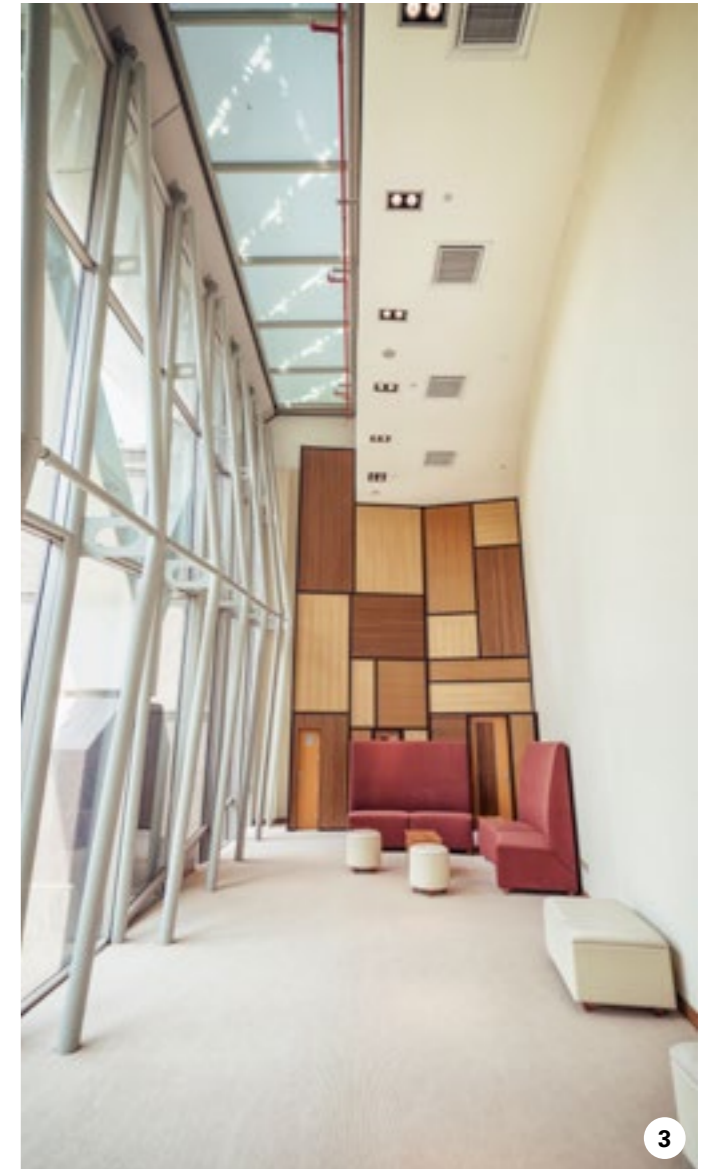
Hospitality spaces at the Esplanade Concert Hall and Esplanade Theatre make excellent hosting areas for private functions and corporate events. Spread over four levels, these spaces serve different capacities, catering to both big and small functions.

1) CONCERT HALL AND THEATRE FOYERS

With a standing capacity of 200 to 350 people, these foyer areas can be used for receptions in conjunction with an event or performance in the Concert Hall or Theatre. These spaces offer views of the city and Marina Bay, and can also be used independently for private and corporate events.

2) CONCERT HALL AND THEATRE SUITES

For an exclusive experience, the elegant and intimate Concert Hall Suite and Theatre Suite (pictured) offer unique settings for private or corporate receptions and events.



3) THE TALL ROOM, ESPLANADE THEATRE

Bathed in natural light, with a high ceiling and a timber wall, The Tall Room offers privacy, respite and an exclusive experience for corporate receptions and events.

4) THE BAY ROOM, ESPLANADE CONCERT HALL

With a spectacular view of Marina Bay, the multi-purpose space is ideal for receptions, talks, workshops, and private and corporate events.

GET INVOLVED

Esplanade is a not-for-profit organisation and a charity with a social mission. Be a part of our mission to inspire, change mindsets and transform lives through the arts.

DONATE – As we enter our next phase of growth, we want to continuously create opportunities for communities in need to experience the arts. We aim to nurture future artists and audiences through new programmes. Here are some causes to contribute to.

COMMUNITY ENGAGEMENT

We work with social service organisations on arts-based programmes that can uplift their beneficiaries.

These range from songwriting programmes that empower vulnerable youth, to singing workshops for seniors with dementia and their caregivers, which help them bond and strengthen their emotional well-being.

Every year we reach out to about 15,000 beneficiaries, including children, youth, seniors and those with special needs.

ADOPT A SCHOOL

The arts can play an important part in a student's educational and developmental journey, opening their minds and shaping their perspectives. Our *Adopt a School* donors enable access to amazing arts performances, workshops and experiences that enrich young people at a crucial time in their lives.



WATERFRONT THEATRE

Esplanade's new theatre, ready in 2021, will be a platform for the next generation of artists and bring the arts to more people. It has an estimated development budget of S\$30 million—S\$10 million of which will come from the government, about S\$20 million of which will be raised by Esplanade through corporate sponsorship and public fundraising.

Singtel has generously donated S\$10 million towards the development of the theatre, so we have approximately S\$10 million to raise!

More than just bricks and mortar, the mid-sized waterfront theatre will allow us to scale up the good work that has been done by many community, youth and arts groups in our small venues. Audiences will get to experience more inspiring performances from around the world, as a majority of new works are made for venues of this size.

ADOPT A TREE, MARK A BENCH

The Esplanade Forecourt Garden is a lush, green oasis in the heart of the city. Adopting a tree or bench there is the perfect opportunity for you to remember and honour a loved one, or celebrate a special occasion.

For more information, visit www.esplanade.com/donations. To get in touch with us, email donations@esplanade.com.



FUNDRAISING EVENTS

Look out for our creative fundraising initiatives, which tell the many stories of how the arts can impact lives, be it from the artist's perspective or from that of underserved communities we've reached out to.

These fundraising events include:

- Our first-ever fundraising gala in June 2018, where more than 300 guests dined on the magnificent Esplanade Theatre stage. It profiled Singapore music artists and groups we have worked with such as Kit Chan, Eugenia Yip, the SYC Ensemble Singers and the ITE Show Choir.
- *Backstage Pass with...*, a series of celebrity and insider tours during our 15th anniversary in 2017. These tours of the centre were led by well-known artists who have performed in our venues and Esplanade staff responsible for keeping the arts centre running like clockwork.
- Artist Chua Boon Kee's series of cat and dog sculptures, each available for adoption through a donation. Chua has supported Esplanade's fundraising efforts twice, first with his exhibition *In the Affair of Cats & Dogs, the Government's Involved and So Shall We* during our 10th anniversary in 2012, followed by *to have a home* in 2018.

SPONSOR – The support we receive from the private sector forms one of our most important sources of income, and helps us make a difference to Singapore's arts scene.

We stage some 3,000 performances annually, so companies and organisations get access to our large base of loyal arts audiences. Not only is their brand elevated through association with Esplanade, Singapore's national performing arts centre, we are also able to create intimate and customised hospitality experiences.

To become one of our valued sponsors or for more information, please call 6828 8322 or email partners@esplanade.com.

VOLUNTEER – Love the arts and want to find out what goes on inside a performing arts centre? Come volunteer with us, from helping out at our community workshops for the underserved, to going behind the scenes of our many festivals.

Email engage@esplanade.com or visit www.esplanade.com/volunteer for more information.



41,000 SHOWS

28 MILLION PATRONS 16 YEARS AND COUNTING

We are one of the busiest arts centres in the world with about 3,000 performances presented annually at Esplanade



VISITING THE CENTRE



LOCATION

Esplanade – Theatres on the Bay sits on six hectares of prime waterfront land at Marina Bay, which is part of Singapore's vibrant civic and cultural district comprising other heritage, arts and entertainment facilities including the National Gallery Singapore, Victoria Theatre & Victoria Concert Hall and Marina Bay Sands.

Esplanade, so named after the original Esplanade Park on Connaught Drive, is strategically located. our neighbours include a major convention centre, world-class hotels, retail outlets, restaurants and bars.

Esplanade is also conveniently linked to malls such as Marina Square, Millenia Walk, Suntec City and Raffles City, as well as to City Hall MRT and Esplanade MRT stations, via a series of underpasses and CityLink Mall.



VISITING THE CENTRE



Tickets to most performances at Esplanade can be bought online at www.esplanade.com, at the Esplanade Box Office or through ticketing service providers such as SISTIC and their authorised agents.

ESPLANADE BOX OFFICE & INFORMATION COUNTER

The Box Office and Information Counter is located on the mezzanine level, right below the Concourse. It is open from 12 – 8.30pm daily.

ESPLANADE MALL

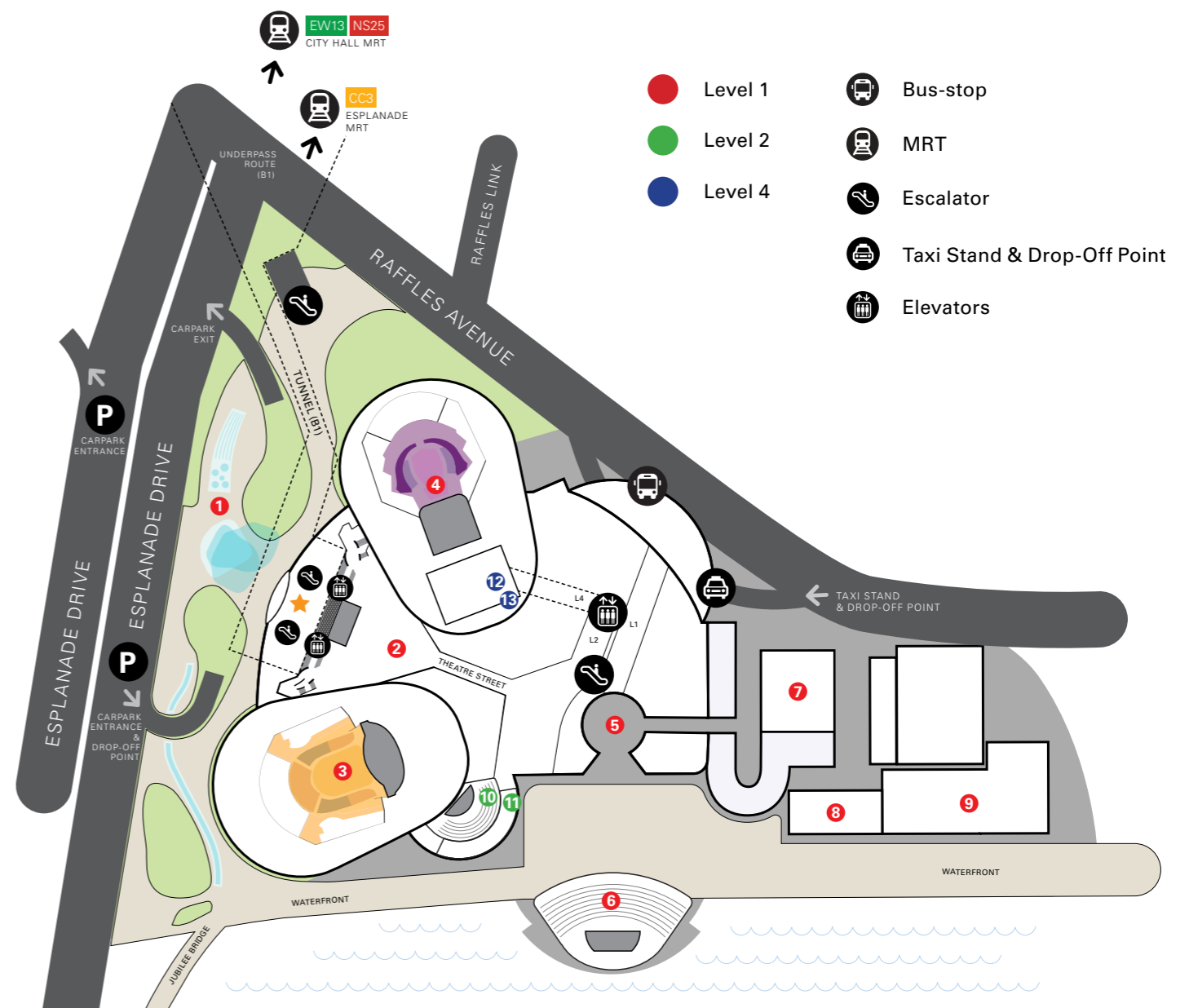
Spanning over 8,600sqm and incorporating the Esplanade Annexe, the four-level Esplanade Mall delivers a total lifestyle experience for all with an exciting and diverse retail mix and varied food and beverage outlets.

In addition to all-day dining, the food and beverage outlets are ideal for a pre- or post-performance dinner or drinks. From fine dining to casual eateries, local favourites to Western delicacies, indoor or al fresco dinners to drinks by the waterfront, a visit to any one of the dining outlets will complete a visit to Esplanade.



CENTRE MAP

- ★ **Mezzanine Level**
Box Office & Information Counter
- ① **Level 1**
Forecourt Garden
- ② Concourse
- ③ Concert Hall
- ④ Theatre
- ⑤ Courtyard
- ⑥ Outdoor Theatre
- ⑦ Annexe Studio
- ⑧ The Lawn
- ⑨ Site of waterfront theatre
- ⑩ **Level 2**
Recital Studio
- ⑪ Jendela (Visual Arts Space)
- ⑫ **Level 4**
Theatre Studio
- ⑬ PIP's PLAYbox






Esplanade – Theatres on the Bay is Singapore’s national performing arts centre, offering a rich line-up of about 3,000 performances featuring dance, music, theatre, visual arts and more annually. Esplanade is operated by The Esplanade Co Ltd, which is a not-for-profit organisation, a registered Charity and an Institution of a Public Character.

1 Esplanade Drive, Singapore 038981 | Customer Service Hotline: 6828 8377

 www.esplanade.com

 [EsplanadeSG](https://www.facebook.com/EsplanadeSG)

 [EsplanadeSingapore](https://www.instagram.com/EsplanadeSingapore)
[#esplanade](https://www.instagram.com/EsplanadeSingapore) [#esplanadesg](https://www.instagram.com/EsplanadeSingapore) [#mydurian](https://www.instagram.com/EsplanadeSingapore)